



Remplace les pointillés par *ch* ou par *ss*.



ta.....e



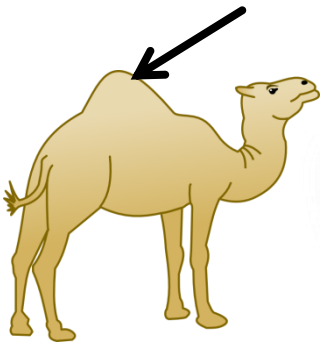
.....ien



ni.....oir



héri.....on



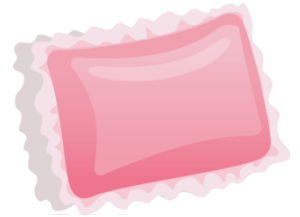
bo.....e



dou.....e



four.....ette



cou.....in



poi.....on



.....ocolat



Remplace les pointillés par *ch* ou par *ss*.



ta...sse



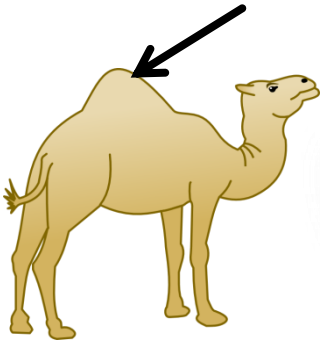
...chien



ni...choir



héri...sson



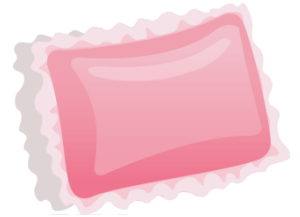
bo...sse



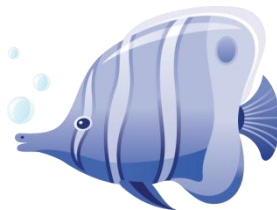
dou...che



four...chette



cou...ssin



poi...sson



...chocolat