

Confusions - Inversions de sons

Prénom :

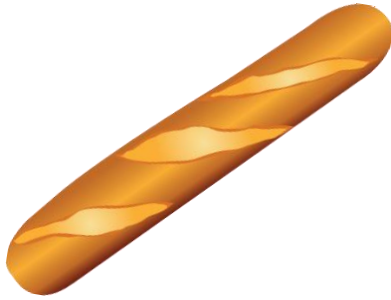
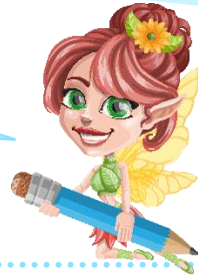
date :

Fiche n°2

ain - ian



Consigne: Barre le mot qui ne correspond pas à l'image.



pain

nian

suppliant

pian

nain

supplait



craint

mendaint

grian

criant

mendiant

grain

Confusions - Inversions de sons

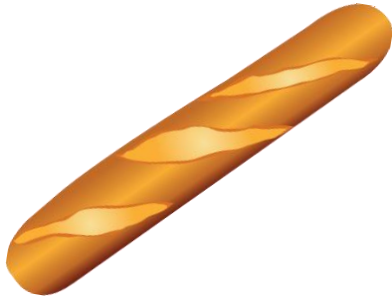
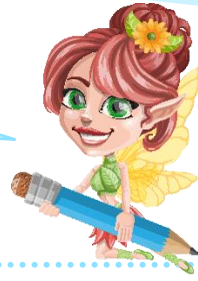
Fiche n°2

Correction

ain - ian



Consigne: Barre le mot qui ne correspond pas à l'image.



pain

~~nain~~

suppliant

~~piain~~

nain

~~supplunt~~



~~criant~~

~~mendant~~

~~grain~~

criant

mendiant

grain