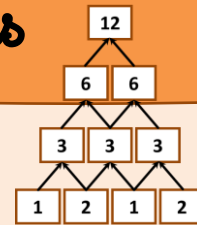


Pyramides d'additions

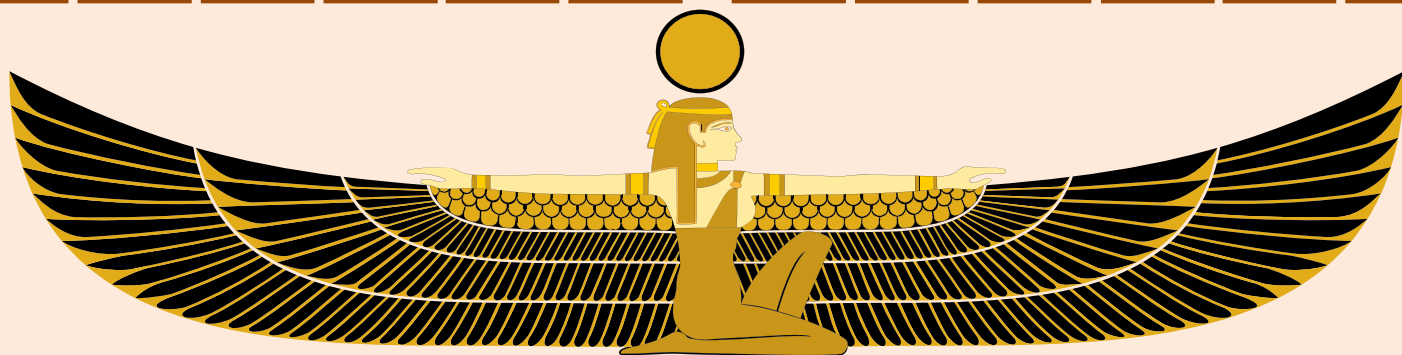
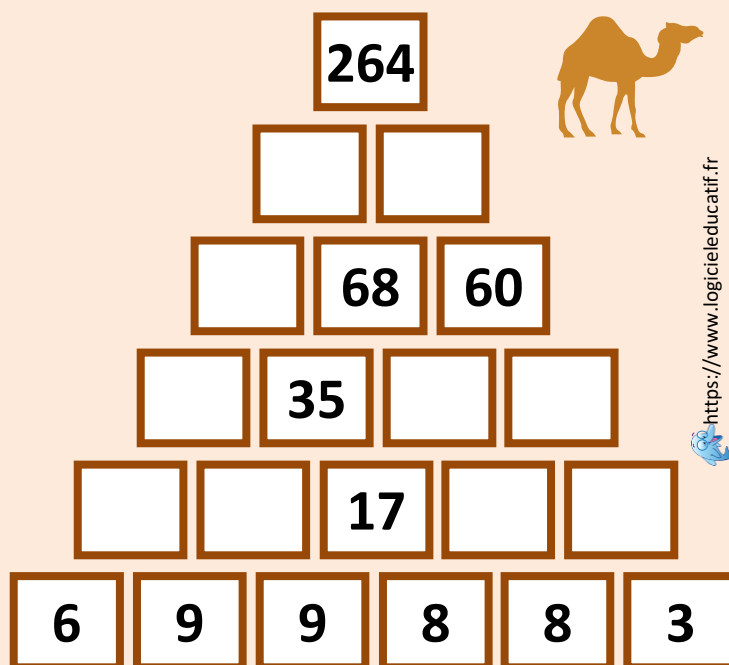
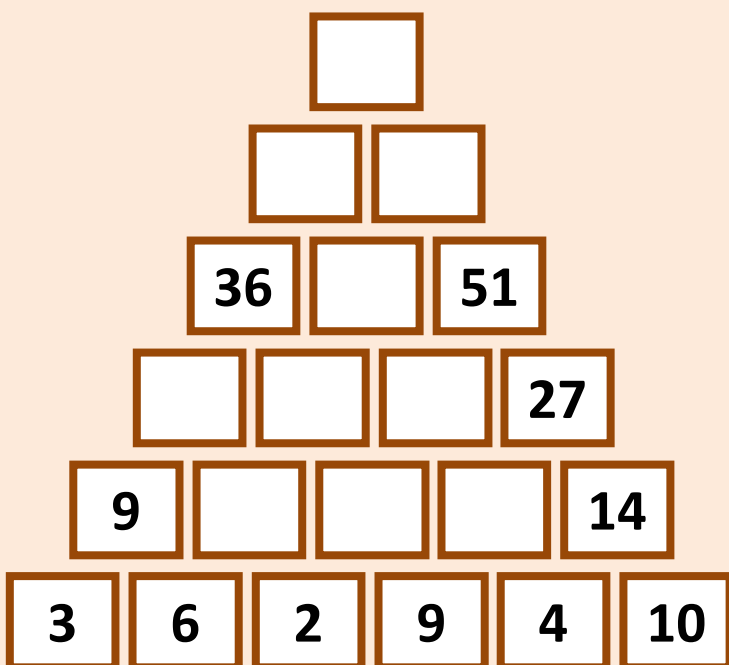
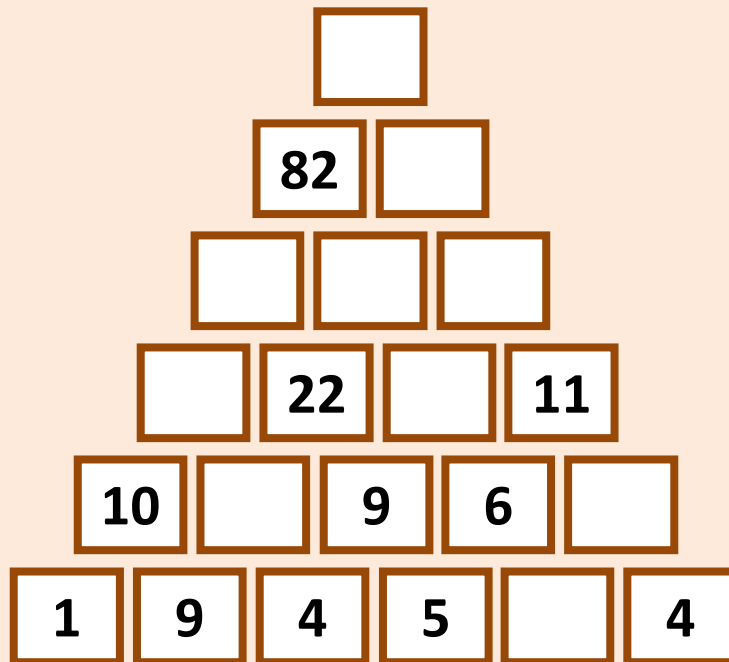
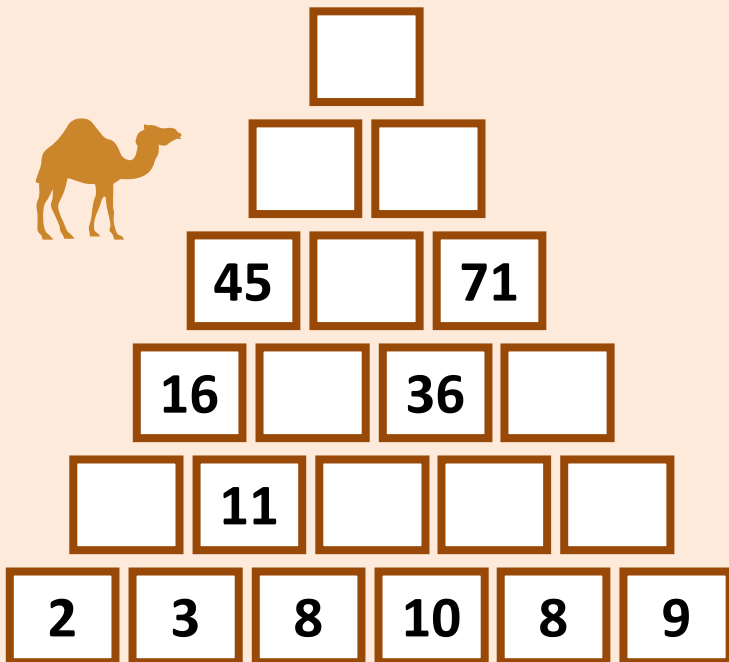


3a

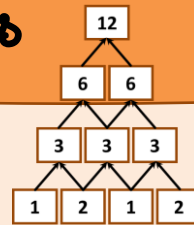
Prénom :

date :

Calcule pour atteindre le haut de la pyramide.
Chaque brique correspond à la somme des deux briques qui la soutiennent.



Pyramides d'additions




3b

Prénom :


date :

Calcule pour atteindre le haut de la pyramide.
Chaque brique correspond à la somme des deux briques qui la soutiennent.



		70			
65		45			
		30		10	
16				11 4	
6				9 2 4	

113					
		55		51	
29				25	
		15			
8		6 9		5 7 6	

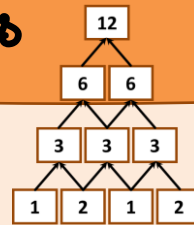


		88			
37					
19				23 24	
10		2 5		6 6 6	

		118			
66				57	
33				28 29	
15				13 16	
		8 10		5 8	



Pyramides d'additions



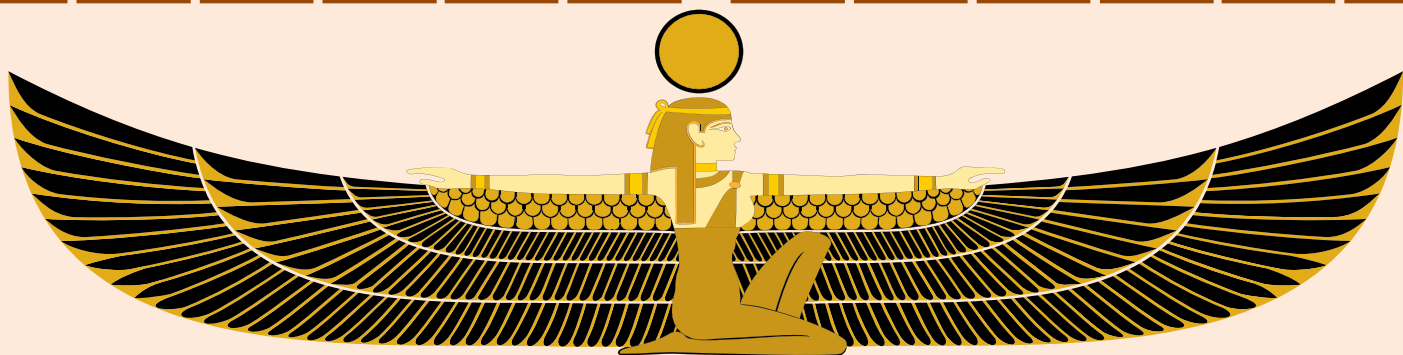
3c

Prénom :

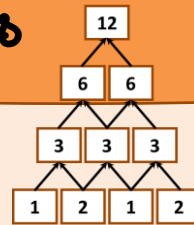
date :

Calcule pour atteindre le haut de la pyramide.
Chaque brique correspond à la somme des deux briques qui la soutiennent.





Pyramides d'additions



3d

Prénom :

date :

Calcule pour atteindre le haut de la pyramide.
Chaque brique correspond à la somme des deux briques qui la soutiennent.



Pyramid 1 (left):

- Level 1: 7, [], 6, 9, 2, 2
- Level 2: 10, 9, [], [], []
- Level 3: 19, [], [], 15
- Level 4: 43, [], []
- Level 5: [], 91, []
- Level 6: []



Pyramid 2 (right):

- Level 1: 5, [], 4, 5, 10, 9
- Level 2: 10, 9, [], [], []
- Level 3: 19, [], 24, []
- Level 4: [], [], 58, []
- Level 5: [], []
- Level 6: 179

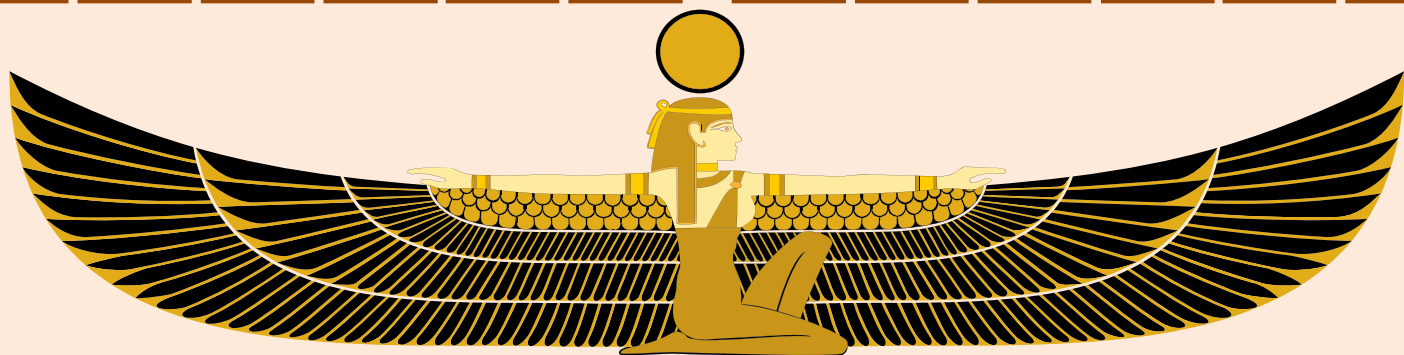
Pyramid 3 (left):

- Level 1: 3, [], 4, [], 2, 1
- Level 2: 4, 5, 14, 12, []
- Level 3: [], 19, [], []
- Level 4: [], [], [], []
- Level 5: 73, []
- Level 6: 159

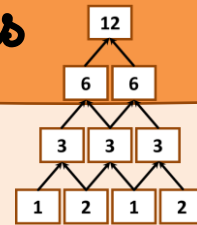


Pyramid 4 (right):

- Level 1: 8, 6, 8, 9, [], 4
- Level 2: [], 14, [], [], 9
- Level 3: 28, 31, [], 23
- Level 4: [], 62, []
- Level 5: [], []
- Level 6: []



Pyramides d'additions



3a
Correction

Calcule pour atteindre le haut de la pyramide.
Chaque brique correspond à la somme des deux briques qui la soutiennent.

246

110 136

45 65 71

16 29 36 35

5 11 18 18 17

2 3 8 10 8 9



145

82 63

45 37 26

23 22 15 11

10 13 9 6 5

1 9 4 5 1 4

173

79 94

36 43 51

17 19 24 27

9 8 11 13 14

3 6 2 9 4 10

264

136 128

68 68 60

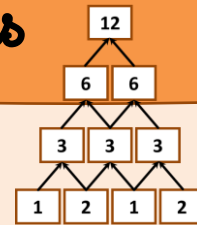
33 35 33 27

15 18 17 16 11

6 9 9 8 8 3

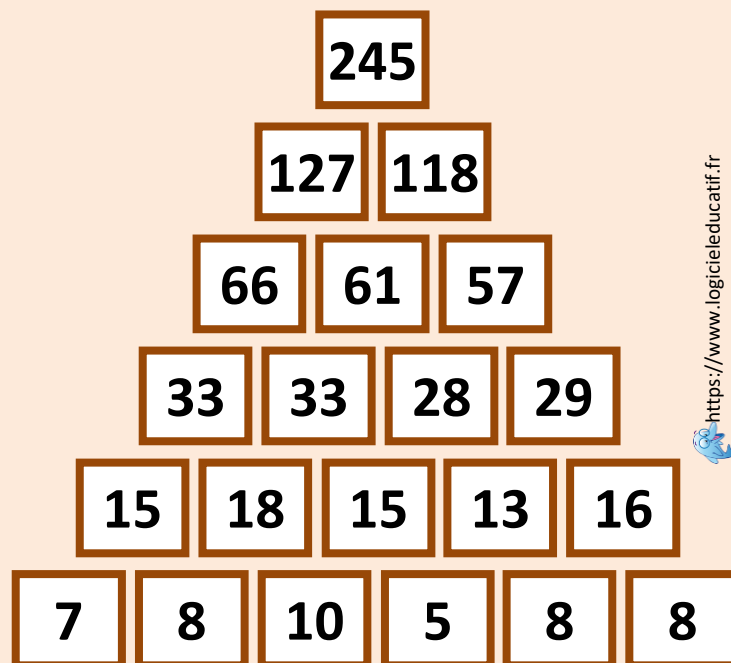
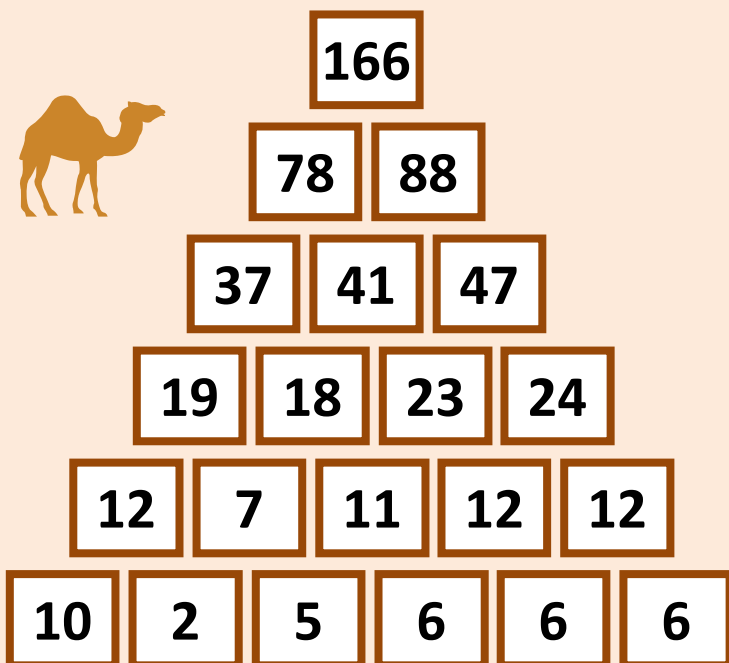
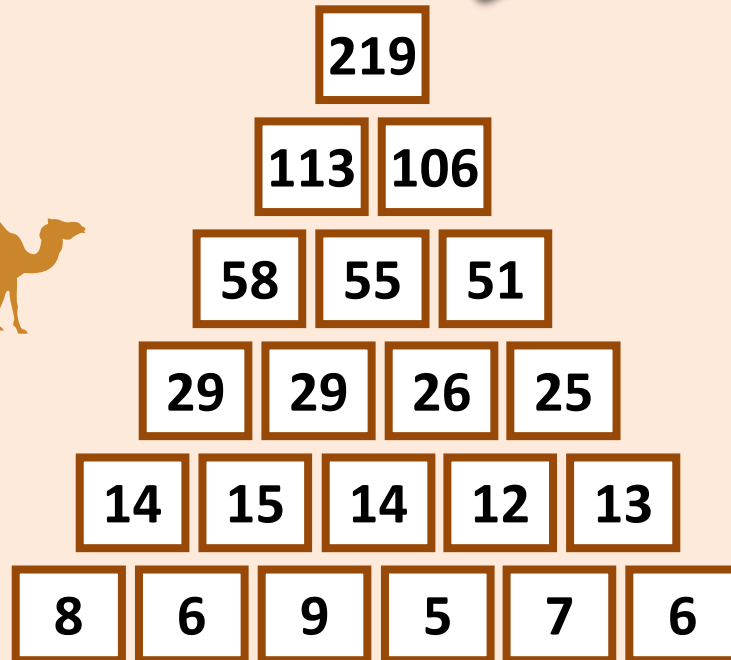
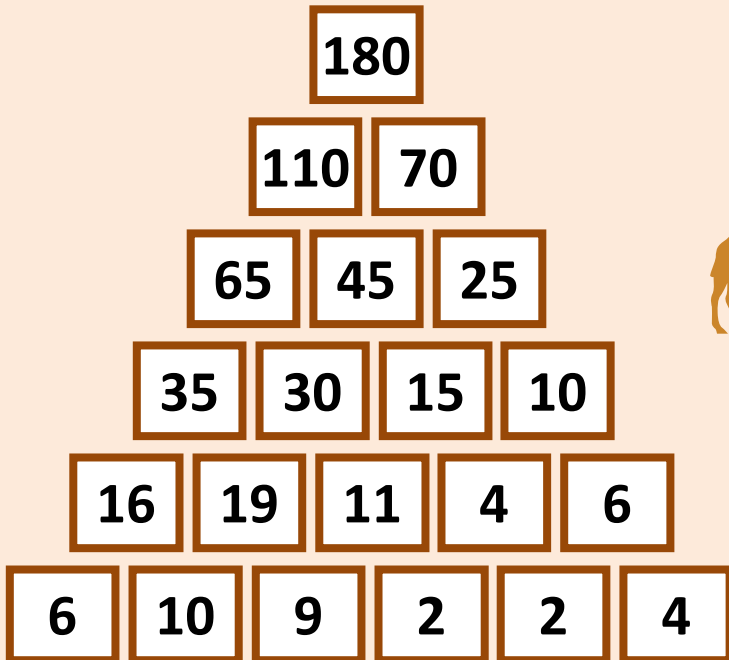


Pyramides d'additions

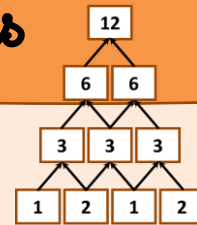


3b
Correction

Calcule pour atteindre le haut de la pyramide.
Chaque brique correspond à la somme des deux briques qui la soutiennent.

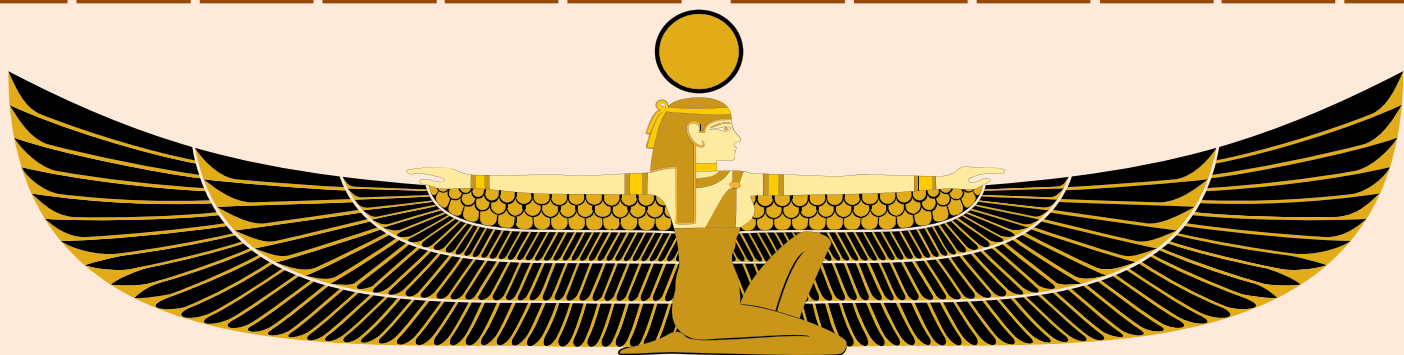
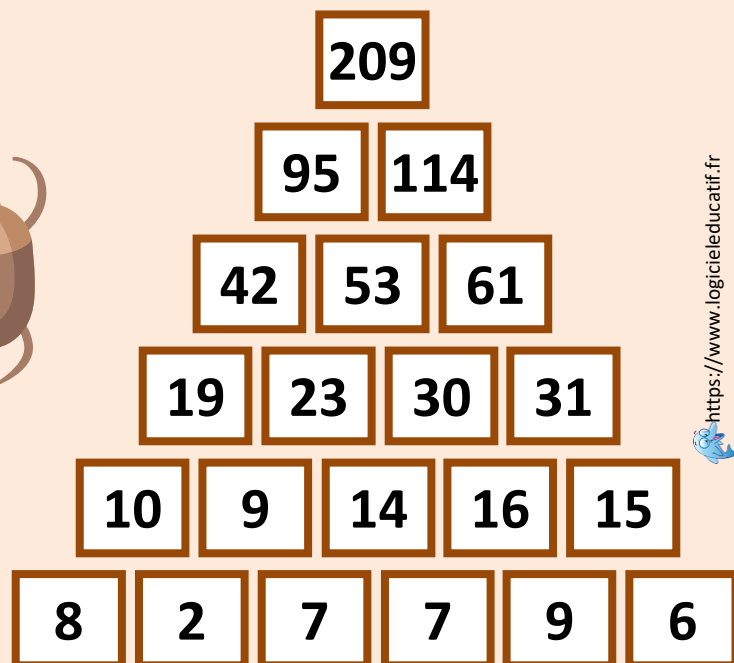
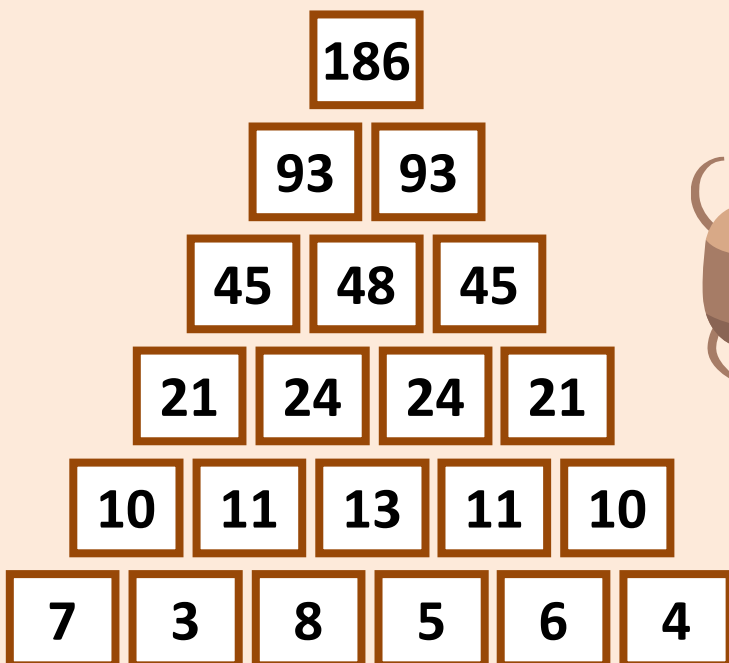
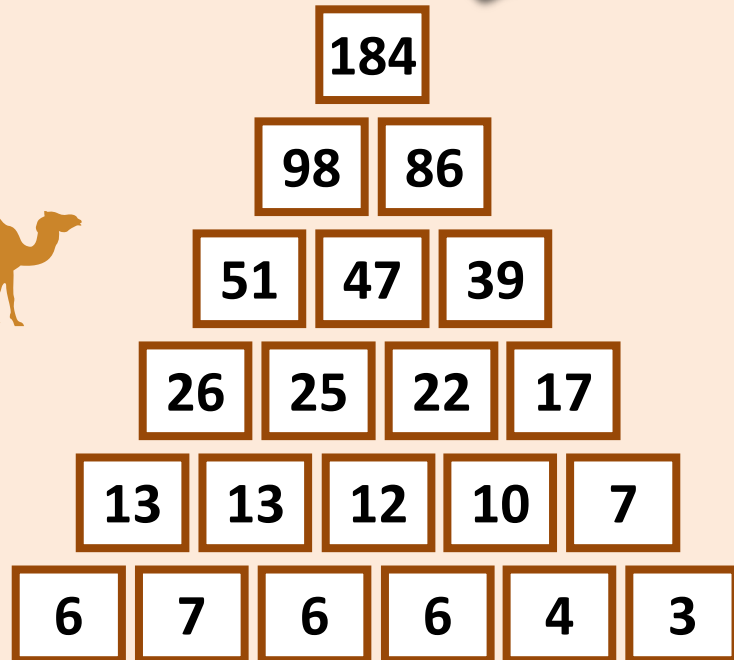
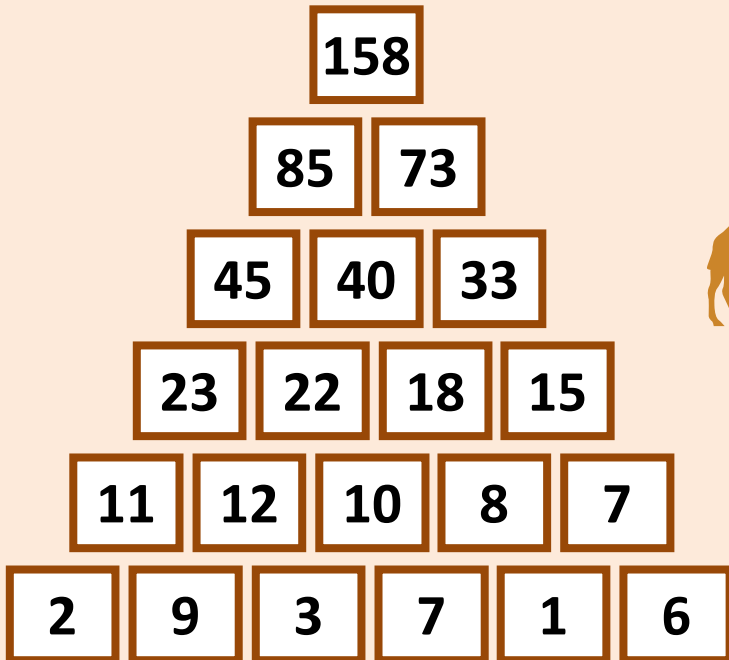


Pyramides d'additions

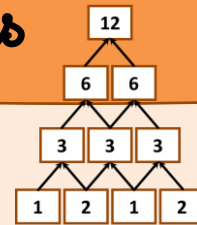


3c
Correction

Calcule pour atteindre le haut de la pyramide.
Chaque brique correspond à la somme des deux briques qui la soutiennent.



Pyramides d'additions



3d
Correction

Calcule pour atteindre le haut de la pyramide.
Chaque brique correspond à la somme des deux briques qui la soutiennent.

